



KODIAK
AMERICA

Nothing Can Stand Up To A Kodiak



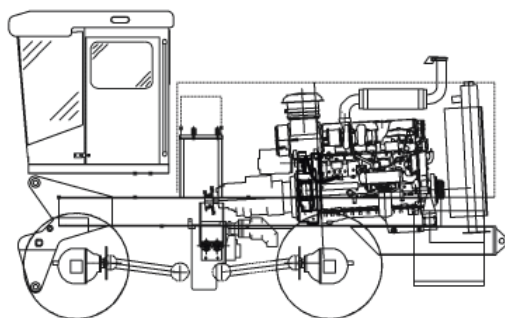
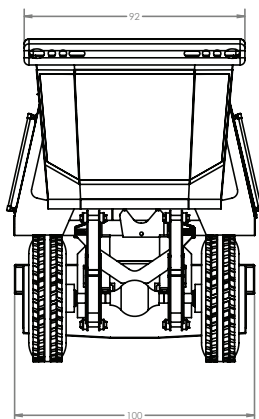
INDUSTRIAL

AND COMMERCIAL
SNOW REMOVAL
EQUIPMENT

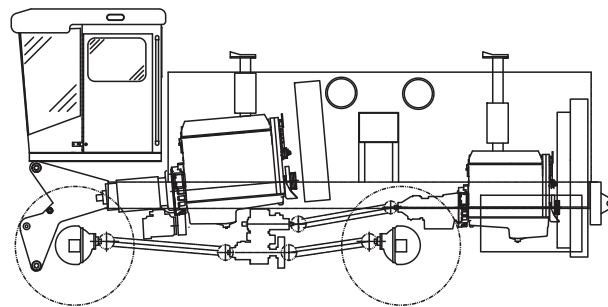
Kodiak is a custom manufacturer of all types of snow removal equipment: featuring cutting edge, industry leading, new components and offering versatility to meet your unique demands.



KODIAK CHASSIS



SINGLE ENGINE CHASSIS



DOUBLE ENGINE CHASSIS

CHASSIS SPECIFICATIONS:

AIR CLEANER

Type: Dry, two-stage with safety element • Underhood and/or outside air intake selector

AXLES

27,000 LBS - 50,000 LBS

AIR BRAKES

Type: Drum or Disc • Spring Mounted
• Standard or Anti-lock

CAB CONSTRUCTION

Extra heavy duty • Corrosion Resistant
• Steel & fiberglass body • Full-length steel piano type door hinges • Fully rust proofed • Panoramic reverse slope windshield • Power windows left & right • Stationary rear window • Dome lights • Courtesy entry lights • Tinted safety glass • 72 inch cab width • Four point rubber mount

STANDARD ACCESSORIES

Electric air horn • National standard plus or Bostrom air ride drivers seat center mounted • Fold-up passenger jump seat • 55,000 BTU heater/defroster • Digital Climate Control • 12 volt power outlet • Cup holders • (2) doors • Electric, heated West Coast type mirrors with separate remote adjustable heated spotter mirrors • Ether starting aid • Keyed chassis engine • Floor mat

- Fresh air type heater and defroster
- Grab Handles • Three electric windshield wipers mounted below windshield with intermittent speed control • Cancelling turn signals
- Side window defrosters • Sun visors, full width front • Tilt/telescoping steering wheel • Windshield washer
- Three point seat belts • Digital clock

INSTRUMENTATION

Plus 1 electronic control package
• LCD dash screen on console
• Speedometer • Odometer
• Tachometer • Hour meter
• Voltmeter • Air system pressure
• Fuel Level with low fuel level warning
• Warning icons for: Low Air Pressure, ABS Fail, ABS Communication lost, Engine Stop, Engine Fail mode, Low Voltage, Engine overheat, Engine low oil pressure, Transmission overheat, Transmission fail, Transmission communication lost, Hydraulic temperature, Hydraulic fluid level, Parking Brake Applied
• Low transmission oil sensor
• Transfer case range
• Traction enhancement locked/unlocked • Transmission gear selection

CHASSIS EQUIPMENT

Air dryer • Backup alarm • Crankshaft PTO adapter • Dual 150 gallon fuel tanks or single up to 600 gallons

- Flat top steel fenders • Full enclosed catwalks • Heated fuel/water separator • Mud flaps front & rear tires • One piece steel engine cover with large gull-winged access doors • Vertical exhaust with stainless steel shield

COOLING SYSTEM

Radiator Core: Fin & tube type with built-in deaerations system • Horizontal flow
Frontal Area: 1,080 in² minimum
Radiator Construction: Bolted with built-in deaeration system
Charge Air Cooler: Cooling flow parallel to radiator
Fan: Engine manufacturer recommended fan

DRIVE ENGINE

250-580 HP

ELECTRICAL SYSTEM

Alternator: 145 amp -270 amp chassis engine driven
Lighting: 12 volt
Starting: 12 or 24 volt
Battery: Four 12 volt, 950 CCA each @ 0°F. (3800 CCA Total)

CAB

Cab Rear or Cab Over



KODIAK CHASSIS

FRAME

Material: Carbon manganese steel, heat-treated

Type: Single formed channel

Yield Strength: 120,000 psi
{827 Mpa} minimum

Section Modulus: 24.85in,
cubed per rail

RBM: 2,857,750 in-lb per rail

Construction: Grade 8 flanged bolts
and flanged lock nuts

Front Frame Extension: 24 inches

Rear Tow Hooks: Two (2)

Bumper: Straight rear, full width

LIGHTING

Cab-mounted headlights with
integral turn signals • Clearance and
marker lights to comply with federal
regulations • Engine compartment
lights • Roof mounted strobe light
• Dual back-up lights • Dual stop, tail,
turn signal lights (LED) at rear • Work
lights

PAINT

Acrylic urethane • Epoxy primer
• One color, customer preference

PROPELLER SHAFTS

Make & Model:

Dana 1710-1810 Series

Dynamically balanced

STEERING SYSTEM

Make & Type: Sheppard 592S integral
hydraulic power gear

4-Wheel Steer: Plus 1 Electronic
Package

Chassis Hydraulics Warning System:
Low level/high temperature

SUSPENSION

Front & Rear Type:

Betts Semi-elliptic spring

Main: 7 leaf, 48 x 4 in.

Auxiliary: 4 leaf, 32 x 4 in.

Rating: up to 50,000 lbs

TIRES

Make & Tread: Bridgestone VHS

Size: 385/95R24



TRANSFER CASE

Make & Models: Marmon-Herrington
Series, Fabco Series

Speeds: Two with Marmon
Smart Shift

TRANSMISSION

Allison® 4th generation

4-5 speed electronic

1st.....3.51:1

2nd.....1.91:1

3rd.....1.43:1

4th.....1.00:1

Reverse4.80:1

VEHICLE RATINGS

Rating at Axle Hubs:

Front: 27-37,000 lb.

Rear: 27-37,000 lb.

Total: 54-74,000 lb.

WHEEL BASE

108-164 inches

WHEELS

Type: Steel Disc • 24.00 x 12 inches

CHASSIS OPTIONS

ACCESSORIES

Air conditions (n/a with auxiliary
heater) • Auxiliary heater • Heated side
window wipers • Heated windshield
• Heated front wipers • National
Premium heated driver's seat with
3-way air adjustable lumbar support
• AM/FM radio with weather band &
CD player • Deluge System
• Lubrication data plates

ATTACHMENTS

Snow Blowers • Various broom
packages • Underbody scraper
(chassis only) • Push Plow

DRIVE TRAIN

Different horsepower engines • Allison
4th Generation 4500 transmission
• All Wheel Electronic Steer • Driver
controlled and automatic lock/unlock
transfer case • External air intake

ELECTRICAL SYSTEM

160-270 amp high-output alternator • HID
and other lighting • On-board battery
charger • Battery Disconnect at battery box

FRAME AND CHASSIS

Single & double side fuel fill • 110-volt in-
tank fuel heater • Centralized side drain kit
• Quick hitch for mounting broom, blower
or plow attachments • ADIP air dryer
• Shock absorbers • Pintle hitch

TIRES & WHEELS

Michelin Tires

WINTERIZATION

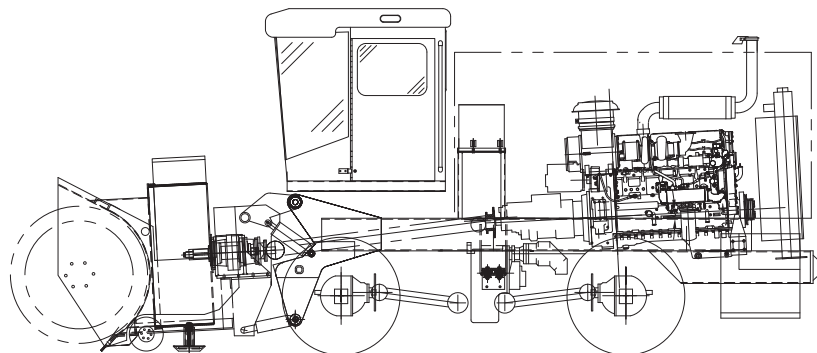
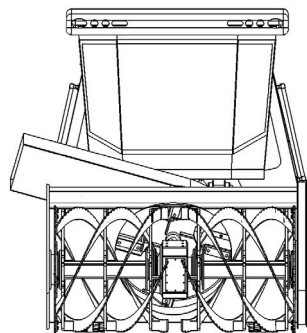
Engine block heater, 1500 watts
• Battery Heater, 300 watts & in-tank fuel
heater • Jumper lugs at battery box

*Consult factory for complete option list and option
compatibility. Other engine ratings are available

KODIAK SNOW BLOWER

BLOWER HEAD AND POWER TRAIN

(MECHANICAL SERIES)



CLUTCH

Type: Full torque with SAE No. 1 housing, power engage/disengage
Size: 14 or 18 in, three plates

HYDRAULIC SYSTEM

	Lift	Ribbon
Tank	16	16
PSI	2,000	2,000
GPM	20	20
Pump	Chassis	Blower
Filter	SAE J931	SAE J931
Control	Joystick	2-speed

Shut off valve at reservoir outlet
• Auger drive • Low oil level/high temp

IMPELLER SHAFTS

Heavy Duty Transmission to blower impeller to Kodiak 352CD Gear Box
• 1710-1810 Series

BLOWER ENGINE

• Horsepower at requested level
400-1300 HP
• Heated fuel/Water separator

BLOWER TRANSMISSION

• Four speed with reverse or Kodiak 965 Gear Reducer

RIBBON AUGER

44-60 inch diameter • 4 Blades
• Mechanical Drive
• Reversible ribbon-drive

IMPELLER

Size: 44-82 diameter • 4-5 Blades
• Two shear bolts for ribbon drive & two shear bolts for impeller shaft flange

HEAD

10 inch steel caster wheels or 16 inch dual pneumatic • Abrasion resistant skid shoes • Two ribbon halves on each side of center drive gear box
• Removable ribbon flights

AIR CLEANER

Type: Dry, two-stage with safety element • Inside/outside air box

COOLING SYSTEM

Frontal Area: 1400 in. minimum*
Radiator Cores: Fin and tube type with built-in deaeration system
Engine Air Intake Cooler:
Mounted in front of radiator
Fan: Engine manufacturers recommended standard
Spin on Coolant Filters
Silicone Radiator and heater Hoses

CAB BLOWER

INSTRUMENTATION

Ribbon Speed • Joystick active/inactive • Joystick fault • Ribbon rotation direction • Ribbon Stopped
• Transmission Range • Chute rotation • Float/weight transfer

TONS PER HOUR

3,000 - 11,000

BLOWER HEAD OPTIONS

Blower Head: Carbide & polymer cutting edges • Carbide skid pads
• Rubber tire casters with weight transfer system • Spare impeller paddles • Left hand flat cast
• Multi-section cutting edges
• Serrated ribbons • Side cutter bars
• Volute liner • Blower head liner
• Spot casting chute
• Quick disconnect prop shaft

WINTERIZATION

Engine oil pan heater • Engine Block heater • Arctic Package

*For reference only. The addition of options will change the listed standard dimensions and weights in some cases. For certified dimensions and weights consult Kodiak America, LLC. Specifications, descriptions and illustrations in this literature are as accurate as known at the time of publication but are subject to change without notice. Ratings are general guidelines. Actual ratings vary with application and duty cycle. Illustrations may include optional equipment and accessories but may not include all standard equipment. Consult Kodiak America, LLC for additional information.

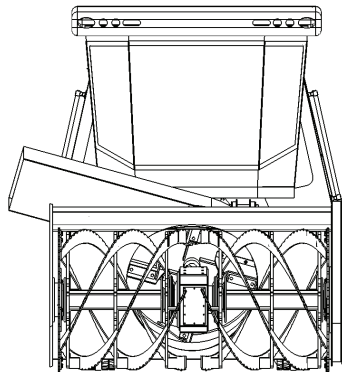


1350 Pomerelle Ave. Burley, Idaho 83318

208-438-8248 tel | 208-438-8502 fax | www.kodiakamerica.us

KODIAK SNOW BLOWER

BLOWER HEAD AND POWER TRAIN
(HYDROSTATIC SERIES)



**BLOWER HEAD
AND
POWER TRAIN
(HYDROSTATIC
SERIES)**

CLUTCH

Type: Full torque with SAE No. 1 housing, power engage/disengage
Size: 14 or 18 inch, three plates

HYDRAULIC SYSTEM

	Lift	Ribbon
Tank	16	20
PSI	2,000	5,000
GPM	20	2,300
Pump	Chassis	Blower
Filter	SAE J931	SAE J931
Control	Joystick	2-speed

Shut off valve at reservoir outlet
• Auger drive hydrostatic warning system • Low oil level/high temp

IMPELLER SHAFTS

Heavy Duty Transmission to blower impeller: 1710-1810 Series

BLOWER ENGINE

Horsepower at requested level
400-1300 HP
Heated fuel/Water separator

RIBBON AUGER

44-60 inch diameter • 4 blades
• Hydraulic override and relief
• Reversible ribbon-drive

IMPELLER

Size: 44-82 diameter • 4-5 blades
• Two shear bolts in impeller shaft flange • Volute liner

HEAD

10 inch steel caster wheels or 16 inch dual pneumatic • Abrasion resistant skid shoes • Dual hydrostatic ribbon drive with high speed motors through planetary reduction
• Removable ribbon flights

AIR CLEANER

Type: Dry, two-stage with safety element • Inside/outside air box

COOLING SYSTEM

Frontal Area: 1400 in² minimum
Radiator Cores: Fin and tube type with built-in deaeration system
Engine Air Intake Cooler: Mounted in front of radiator
Fan: Engine manufacturers recommended standard
Spin on Coolant Filters
Silicone Radiator and heater Hoses

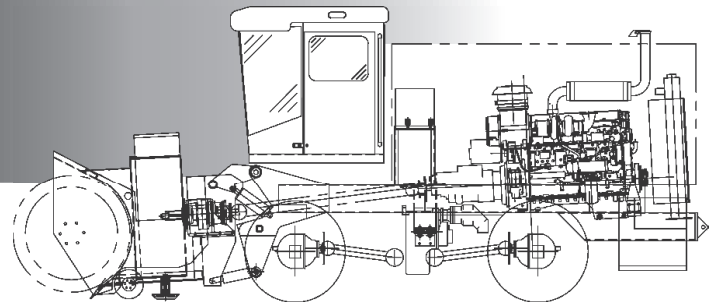
CAB BLOWER

INSTRUMENTATION

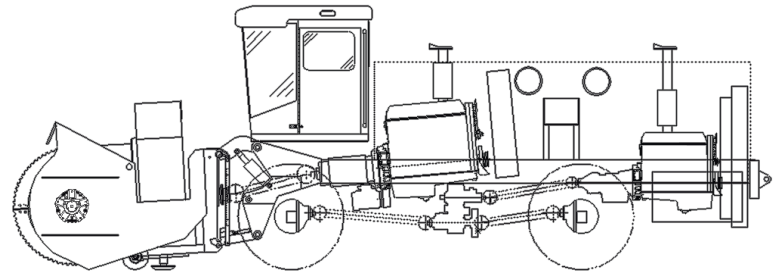
• Ribbon Speed • Joystick active/inactive • Joystick fault • Ribbon rotation direction • Ribbon Stopped
• Transmission Range • Chute rotation
• Float/weight transfer

TONS PER HOUR

3,000 - 11,000



SINGLE ENGINE BLOWER



DOUBLE ENGINE BLOWER

BLOWER HEAD OPTIONS

Blower Head: Carbide & polymer cutting edges • Carbide skid pads
• Rubber tire casters with weight transfer system • Hydraulic relief valve block • Spare impeller paddles • Left hand flat cast • Multi-section cutting edges • Serrated ribbons • Side cutter bars • Volute liner • Blower head liner
• Spot casting chute • quick disconnect prop shaft

Winterization: Engine oil pan heater
• Engine Block heater • Arctic Package

*For reference only. The addition of options will change the listed standard dimensions and weights in some cases. For certified dimensions and weights consult Kodiak America, LLC. Specifications, descriptions and illustrations in this literature are as accurate as known at the time of publication but are subject to change without notice. Ratings are general guidelines. Actual ratings vary with application and duty cycle. Illustrations may include optional equipment and accessories but may not include all standard equipment. Consult Kodiak America, LLC for additional information.

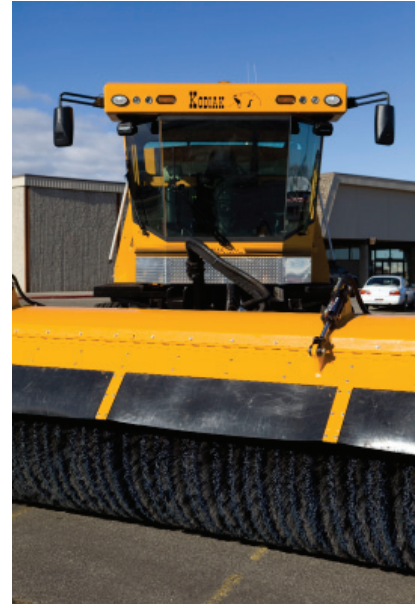
**NOTHING
HANDLES SNOW
LIKE A
KODIAK**



1350 Pomerelle Ave. Burley, Idaho 83318

208-438-8248 tel | 208-438-8502 fax | www.kodiakamerica.us

KODIAK RUNWAY SWEEPER/BROOM



**NOTHING HANDLES A RUNWAY
LIKE A KODIAK**

1350 Pomerelle Ave. Burley, Idaho 83318
208-438-8248 tel | 208-438-8502 fax | www.kodiakamerica.us



KODIAK RUNWAY SWEEPER/BROOM

- SPECIFICATIONS -

BROOM/AIRBLAST CONFIGURATION

- Truck Mounted High Speed Broom Head
- Truck Hitch – Parallel Lift Quick-Disconnect
- Auxiliary Power Unit w/ Airblast Assembly

BROOM HEAD

- Heavy-Duty Welded Construction
- Dual Motor End Drive or Single Motor Center Drive – Hydrostatically Driven
- Broom Weight – Centered on Chassis at all Angles
- Side to Side Oscillation – Eight (8) Degrees
- Casters – 360 Degree Rotation w/ Shimmy Dampener
- Brush Pattern Adjustment – Tool Less
- Caster Tires - 18x7x8 16 Ply Duals

BROOM

- Brush Length - 14' to 24'
- Brush Diameter – 36" or 46"
- Brush Type 19-1/2" I.D. Segments w/ Spacers
- Ply and/or Crimped Wire Bristles
- Brush Cores – Welded Tubular Steel
- Dual Core Design – Minimal Center Gap

QUICK HITCH

- Parallel "Lift to Attach" Design
- Quick Disconnect – No Tools Required
- Weight Transfer System for Attachments

ENGINE POWER UNIT

- 300 HP thru 700 HP Available
- Electronically Controlled
- Turbo Charged and Charge Air Cooled
- Flywheel mounted 2-Pad Pump Drive
- Cooling Package – Heavy-Duty Fan/Radiator
- Air Cleaner – Dual Element w/Pre-Cleaner
- Engine Compartment – Fully Enclosed w/Doors

TRANSMISSION

- Industry Leading Componentry
- Pumps – Mounted in Tandem
- Motors – w/Hot Oil Shuttle Valve
- Maximum 5400 Ft/Lbs.
- Warranty: One year or as specified by Customer

AIR BLAST UNIT

- Dual Impeller – Left & Right Hand Nozzles
- 24,000 CFM Volume Rating
- Up to 450 MPH Velocity
- Complete Swept Path Covered by Air Flow
- Interlocked with Broom Controls
- Ducts Lift Up for Clearance while Transporting

HYDRAULIC SYSTEM & CONTROLS

- Pressure Compensated Hydraulic Pump
- Oil Reservoir, Filters, Valves, Disconnects, Oil Cooler, Hoses & Fittings per SAE Standards
- Controls – Located in the cab within easy reach
- Up/Down, Left/Right, Hitch Lift, Deflector etc.

*Kodiak America, LLC reserves the right to change specifications without notice. Consult Kodiak America, LLC for additional information.



KODIAK LOADER MOUNTS



**NOTHING CAN STAND UP
TO A KODIAK**

1350 Pomerelle Ave. Burley, Idaho 83318
208-438-8248 tel | 208-438-8502 fax | www.kodiakamerica.us



KODIAK LOADER MOUNTS

- SELF CONTAINED -

**CAPACITY UP TO
7,000 TPH**

ENGINE: 160 HP - 765 HP



- SPLIT PACKAGE -

**CAPACITY UP TO
6,000 TPH**

ENGINE: 200 HP - 765 HP



- SPECIFICATIONS -

ENGINES

Horsepower at requested level
160-765 HP

DESIGN

Two Stage: (Ribbons & Impeller)
Self-Contained Engine & Snow Blower on
front of loader. (Mechanical Drive System)
or
Split-Package with engine on rear of loader
and snow blower on the front.
(Hydrostatic Drive System)

CAPACITY

Up to 6000 TPH (tons per hour)

SNOW BLOWER CUTTING WIDTHS:

102 inches – 132 inches

INPUT REEL SIZES

23 inches - 60 inches

IMPELLER SIZES:

36 inches - 60 inches

CASTING DISTANCE

Up to 150 feet

CUTTING HEIGHTS

30 inches - 60 inches

HITCH

Able to hitch to any wheel loader.
Quick Hitch Available

STRUCTURAL

Hardox & T-1 Steel

STANDARD ITEMS

Engine Block Heater
Two-stage air cleaner
Wired control panel for loader
Scraper Blade
Right/Left casting through 145 degrees
Steel Engine Cover
Gear Boxes (self lubricating)
Serrated Ribbons
Skid Shoes
Shear Pin Protected
Hydrostatic Relief Protected (Split-Package
Configuration)
Over Center or Air Clutch engaged from cab
Steel Engine Cover with ample access to engine
and components

OPTIONS

Truck Loading Spot Casting Chute
Wireless Remote Controls from Loader Cab
to Snow Blower



Nothing Can Stand Up To A Kodiak

www.kodiakamerica.us | 208.438.8248 | 1350 Pomerelle Ave. Burley, Idaho 83318

FOR NEW AND USED SALES INFORMATION PLEASE CONTACT:

ISO 9001:2008



Dealer

Blank area for dealer information.